

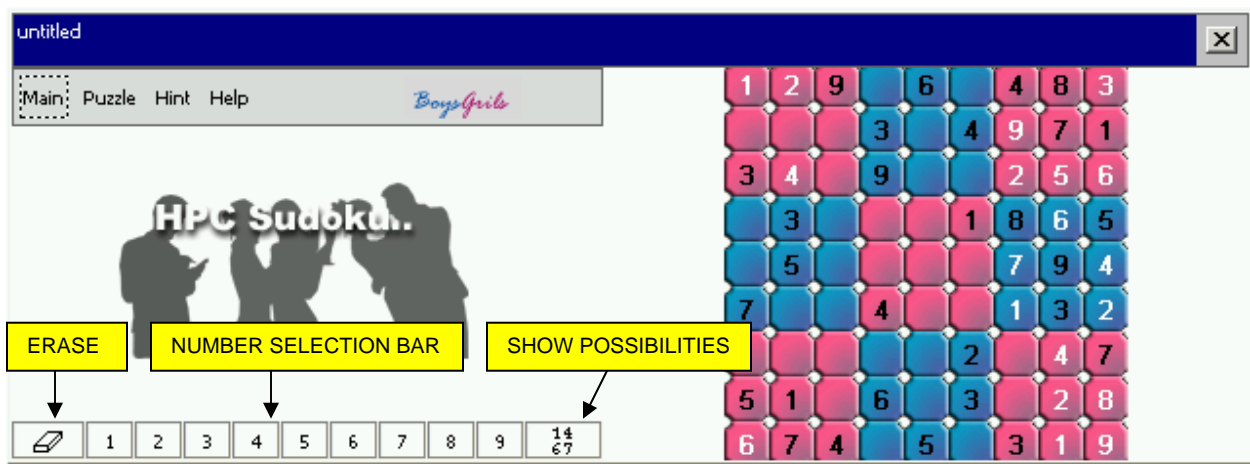
# RAINER HERRLER'S - MOBILE-SUDOKU 2.0 FOR HPC

## Quick Reference Guide

By John Ottini

### The Object of the Game

The aim of Sudoku is to place numbers from 1 through 9 into the partially filled 9x9 grid. The Sudoku grid is composed of nine 3x3 sub grids in which the following conditions have to be met when entering the missing numbers. You must fill in the grid so that every row, every column and every 3x3 box contains the numbers 1 through 9 without duplication.



### The Menu Functions

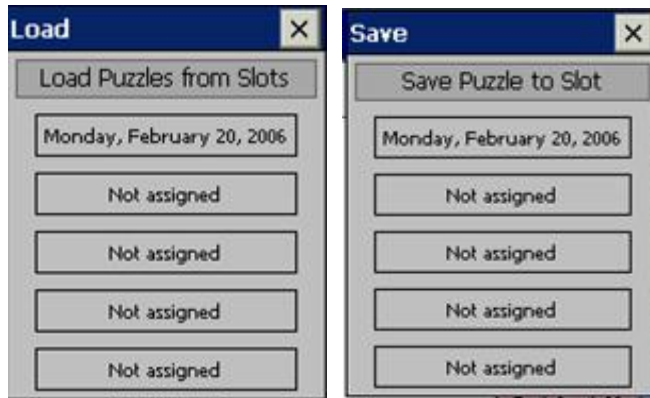
#### MAIN MENU

**Play Mode:** Select this function to begin solving the puzzle.

**Compose Mode:** Empty the board and then select this option to manually create your own Sudoku Puzzle.

**Save Puzzle:** Select this to save puzzles that you have already started.

**Load Puzzle:** Select this to load puzzles that were previously saved.



**Skin:** This allows you to load one of five skins available **Classic, Soil, Boys & Girls, Red & Blue and Style)**



**Exit:** Exit the software.

## PUZZLE MENU

**Heavy:** Randomly selects 1 of 24 difficult puzzle entries.

**Medium:** Randomly selects 1 of 32 medium puzzle entries.

**Easy:** Randomly selects 1 of 48 easy puzzle entries.

**Undo:** Delete any entry on a highlighted/selected square.

**Empty Board:** Clears the grid of all numbers (used in conjunction with Compose Mode to manually create your own Sudoku Puzzle).

**Reset Puzzle:** Resets the puzzle to its original state.

## HINT MENU

**Show Violations:** Once activated it will show all incorrect entries in red.

**Show Possibilities:** Shows every number possibility available on every blank grid square.

Number possibilities show in each blank grid when the **Show Possibilities** feature is activated.

1	2	9	57	6	57	4	8	3
8	68	568	3	28	4	9	7	1
3	4	78	9	18	8	2	5	6
249	3	2	27	279	1	8	6	5
28	5	126	28	238	6	7	9	4
7	689	68	4	89	568	1	3	2
89	89	3	1	189	2	56	4	7
5	1		6	479	3	2	2	8
6	7	4	8	5	8	3	1	9

Violations shown in RED when **Show Violations** Feature is activated.

**Solve Step:** Randomly fills in one of the missing numbers each time you select this function.

**Solve:** Automatically solves the entire puzzle.

## HELP MENU

**Rules:** A brief list of the game rules.

**Register:** Select to enter registration Code

**Developers Website:** **Mobile-Sudoku 2.0 for HPC** is available from Software Developer Rainer Herrler's website at [www.sudoku.buschtrommel.net/Installation-en.php](http://www.sudoku.buschtrommel.net/Installation-en.php)